



LHS News

A Newsletter for Members & Friends of the Lenexa Historical Society
January/February 2003

Volume 21, Number 1

The Presidents Corner.....This past fall, Brant Gaul of the city staff and LHS member, asked the Legler Barn staff to check into the birthplace of J. C. Nichols. Brant thought it possible that J. C. Nichols was born on a farm at 95th and Clare Road, in what is now within the city limits of Lenexa. Beryl Hennigh, through her research and telephone

calls came up with some old maps and a 1957 Olathe Centennial publication.

An 1874 map shows 220 acres of land on the northeast corner of 95th and Clare Road owned by T.T. Nichols. This was J. C. Nichols grandfather. A 1922 map shows the same land with Jesse T. Nichols as.. (con't page four)

JANUARY

MEMBERSHIP MEETING

Thursday, January 23

Dinner 6:30pm

Lenexa United Methodist Church

91st Terrace & Caenen Lake Rd

Lenexa

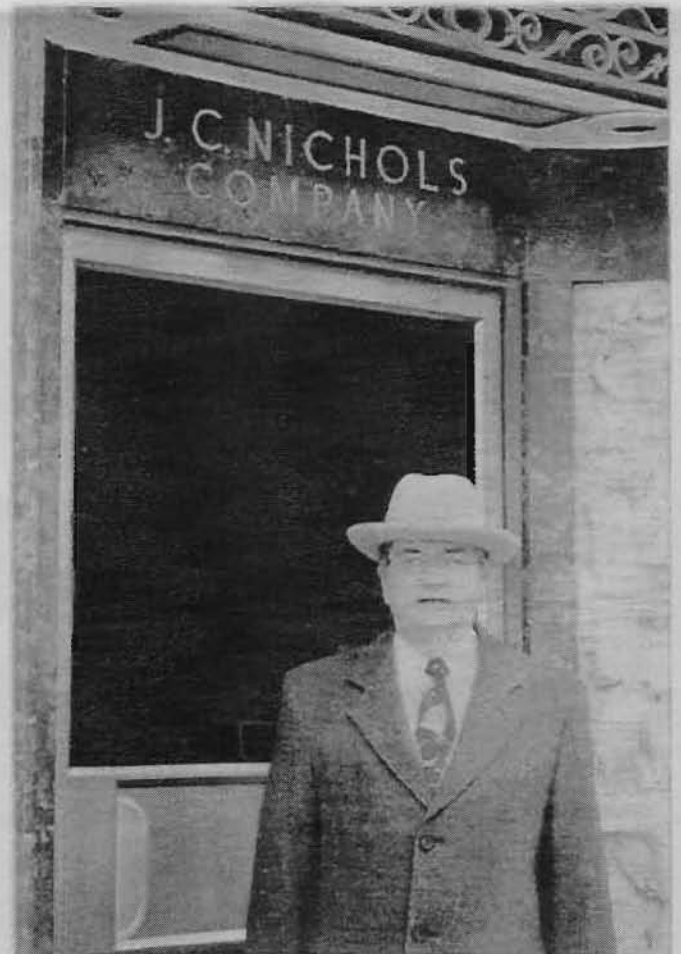
Program...."J.C. Nichols"

Portrayed by Dr. Bill Worley

Adjunct Faculty Member UMKC

Historical Consultant

Author of J.C. Nichols and the Shaping
of Kansas City



Look at All of Those Bears, Oh My!

By Allison Elliott

The Legler Barn Museum was full of teddy bears, and their owners, as they gathered to celebrate Teddy Bear's 100th Birthday at a party Saturday afternoon Dec. 7, 2002. Partygoers viewed the "Happy, Happy Birthday Teddy" exhibit, had their picture taken with their favorite bear by Bob Lillie, and snacked on refreshments served by Sue Wilson while listening to a few teddy bear stories read by Ernestine Johnson. Before leaving visitors picked out their own Teddy Bear ornament, donated by LHS quilter Ellen Strickland, to take with them along with a coloring book and a paper bear doll. Visitors also had the opportunity to check out the Frisco depot hosted that afternoon by Joe Wilson. The "Happy, Happy Birthday Teddy" exhibit runs until Dec. 22, 2002. For more information about this or any upcoming exhibit please call the Legler Barn Museum at 913-492-0038 or drop us an email at museum@ci.lenexa.ks.us.



2003 LHS CALENDAR OF MEMBERSHIP MEETINGS

January 23, Thursday	6:30pm Dinner Meeting	Bill Worley as "J.C. Nichols"
March 29, Saturday	9am Breakfast Meeting	Bill Strickland as "Jim Bridges"
May 22, Thursday	6:30 Dinner Meeting	Peggy Stanton, Treasures of the Barn
July 24, Thursday	6:30 (indoor) Picnic	Walter McKenzie: Kansas Trivia Contest
September 25, Thursday	7pm at Lakeview Village	Program to be announced
November 20, Thursday	6:30 Dinner Meeting	Program to be announced

(Note: all meetings are at Lenexa United Methodist Church, except the September meeting at Lakeview)

.....PLEASE MARK YOUR CALENDARS FOR THE WHOLE YEAR!!!!.....

Historic Sites Book.....The Overland Park Historical Society has published a paperback directory that is an annotated listing of over 200 historic sites in Johnson County. Cost is \$5 and may be purchased in the Gift Shop of the Legler Barn Museum

Fourth Annual Kansas Heritage Trade Show.....Saturday, January 25.....9a-3p.

Will be held in the old 4-H Building at the Johnson County Fairgrounds, 136 East Washington, Gardner. This is a chance to shop for clothing, and equipment used by fur trappers, plainsmen, Civil War and cowboy Eras. There will be a community table where you can bring a few pre-priced items for sale, or purchase a booth for only \$10.....Food will be available on site, and there will be live music and an open mic. Admission is \$1 and parking is free.

(info gathered by Beryl Hennigh from
MAHAFFIE STAGECOACH
STOP "NEW VIEW"

Winter 2002-
2003)



**LEGLER BARN MUSEUM
TO CELEBRATE ITS
20TH ANNIVERSARY!**

This coming May the Legler Barn Museum will be celebrating its 20th Anniversary! Plans are already underway for a 20th Anniversary exhibit. If you have any stories about the Barn, rebuilding it, or volunteering at the museum we would love to hear them.

Please feel free to call Allison at the Museum 913-492-0038 or email her your stories at aelliott@ci.lenexa.ks. THANKS!

Historical Firsts of Johnson County

Shawnee was the **FIRST SETTLEMENT** when it was designated as the HQ for the Shawnee Reservation.

The **FIRST U.S. SENATOR FROM JOCO** was James B. Pearson, who served from 1962-1978.

The **FIRST COLLEGE** was the Olathe College which operated from 1873-1883.

The **FIRST AIRPORT WEST OF THE MISSISSIPPI** was built in Overland Park at Santa Fe & Robinson by William Strang in 1912.

(Gathered by Beryl Hennigh from Historical Firsts of Johnson County, L.H.S. 2000, \$2)

**March Membership Meeting
Saturday March 29, 2002
Lenexa United Methodist Church
9am....Breakfast!!
Program: "Jim Bridger"**

Portrayed by
Bill Strickland
Retired Dean, School of
Pharmacy, UMKC



Historic Sites in Johnson County.....*Gardner Lake Beach House 1935-1938*

The Gardner Lake Beach House is located on the West side of Gardner Lake. Built by the W.P.A., it is constructed of Kansas limestone and is one of the few remaining buildings from the Gardner Lake Project. The project was built to provide work for unemployed men. It included a dam, beach, shelter house, toilets, outdoor ovens, picnic tables, athletic fields and boat dock. The site was used from 1938 to 1943, and was placed on the National Register of Kansas Historic Places in 1992.

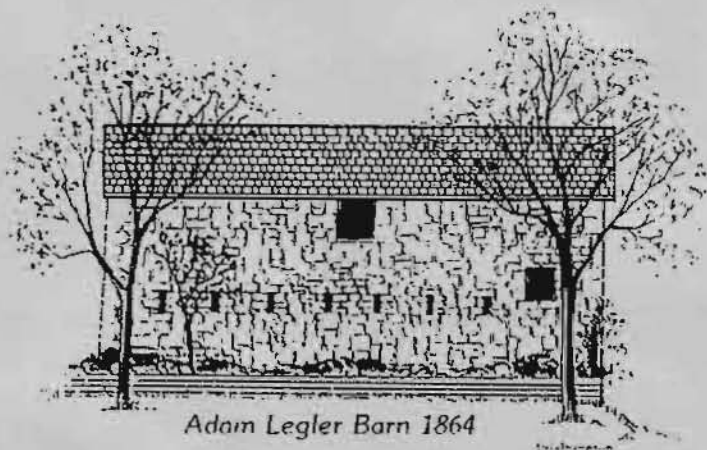
(con't from Page One)....OWNER. This was J.C. Nichols father. Both maps show the location of a dwelling on the property, on 95th street just east of Clare Road. The four stone walls of this dwelling are still standing. I went out to the location and took some pictures of what remains of the house.

The 1957 Olathe Centennial publication indicates that J. C. Nichols was" born on a farm eight miles northwest of Olathe on August 23, 1880." Even

though J. C. Nichols always claimed Olathe as his home, it appears that he was born in what is now Lenexa.

To verify this and to get more firsthand information regarding him, we have invited J. C. Nichols, portrayed by Bill Worley, to speak at our January general meeting. I will also bring copies of the pictures I took of the old house.

Bob Lillie, President 2003



Lenexa Historical Society

14907 West 87th Street Parkway
 Lenexa, Kansas 66215
 492-0038

*Join the Lenexa Historical Society
 TODAY!!!!*

Or

RENEW your membership.

Lenexa Historical Society Membership Application for Renewals or New Members

Homesteader, Single	___ \$20 (Annual)	Corporate Memberships	
Homesteader, Family	___ \$30 (Annual)	Lenexa Station Agent	___ \$100 (Annual)
Spinach Farmer, Life	___ \$200-249 (Life)	Stonemason	___ \$1000 (Life)
Legler Barn Builder	___ \$250-499 (Annual)	Octave Chanute Society	___ \$2,500 (Annual)
Na-Nex-Se	___ \$500-749 (Annual)		and up
Chief Blackhoof's Tribe	___ \$750 and up (Annual)		

Name(s) _____

Authorized person, if corporation _____

Street _____

City _____ State _____ Zip _____

Home phone _____ Business phone _____

Please mail to LHS, 14907 W. 87th St. Pkwy, Lenexa, KS 66215-4135 by JANU-
 ARY 31. Please make checks payable to Lenexa Historical Society. THANK
 YOU!

TWAS the night of the
"Old Town Lenexa Christmas Lighting"



Old Town Lenexa all lite up, what a beautiful sight



Santa's list was



Hot Apple Cider, oh so good

Roasting Marshmallow, what a treat



*Mayor Bowman and her fam
lite up the night with a flip*



Christmas Carol's were sun

PHOTO GALLERY

by Sharon Hammonree &



ons into the night

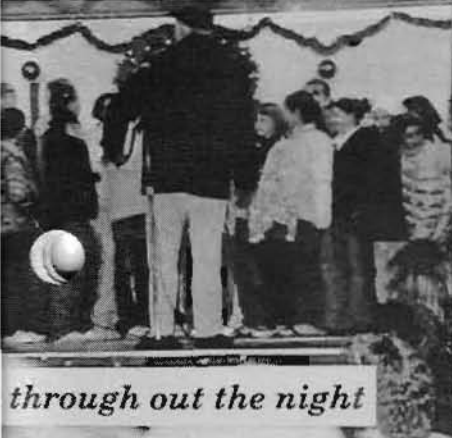


Bon Fires were built to chase away the chill

Miss Nina's Little Dancing Darlings, what a delight



ly
f a switch



through out the night



MERRY CHRISTMAS TO ALL AND TO ALL A GOOD NIGHT

THE ROOTS OF HISTORY

By Bill Nicks, LHS Member

There are a couple of History "Tree" lessons in Lenexa. The first is a walk through time along the Little Mill Creek jogging trail from 84th Terr. to 87th St. Parkway. The development company *Acuff and Rhodes* planted a tree for each past Lenexa Mayor along the trail. A plaque, at the base of each tree, was installed honoring each mayor. The plaque lists the mayor's name and the years he or she served. This walk/jog through time starts just north of 84th Terr. and east of Hallet. It ends in 1907 just north of 87th St. Parkway. Oh! The Mayors? Becker, Nelson, Manske, Lingle, Gaul, Mayer, Marshall, Meyer, Shannon, Fry, Logan, Keller, Switzer, Sheridan, Allen, Krumm, Legler, Jones, Haskins, Burnett, Swift, Denison, Brown, and Switzer.

Another tree-mendous history lesson is found just south of the Lenexa fire station at Lackman Rd. and 87th St. Parkway. In 1999 the *Sons of the American Revolution* donated and planted a Tulip

Poplar tree to Lenexa commemorating the George Washington Memorial. The donated tree came from a cutting from a tree found on Washington's Mount Vernon. This healthy little tree was planted very near the site of Lenexa's *Kansas State Barbeque Championship*. None of the BBQ chefs have clipped any of its branches. Apparently poplar is not a popular kindling wood.



In addition to those "histrees" I'd like to point

out a large Lenexa Cottonwood to you. It can be found south of 95th St. west of Renner near the Johnson County Streamway Jogging Trail. This cottonwood is about a furlong south of mile marker 11 on the trail. How long, you may ask, is a furlong? It's not fur. You can see the top of the tree from the Streamway entry point parking lot at the end of

95th St. near Ridgeview, if there was a Ridgeview. Be patient, there will be soon. The circumference of the tree is 20'9". Now that's fur!! For a Kansas tree. Take the kids down there, find it, grab hands and try to encircle it while speculating on the history it has seen. I wonder if it was there when Lenexa started electing mayors?

New Members who joined in 2002

Richard & Virginia Bartley, Springfield, MO
Thomas & Katherine Cole, Kansas City, MO
Jim & Claudia Halley, Lenexa
T. Kent and Joan Lundgren, Overland Park
Tom & Kay Plaster, Lenexa

Rick & Linda Bridges, Lenexa
Allison Elliott, Lenexa
Sharon Hammontree, Overland Park
Mary Penny, Lenexa
U.S. Central Credit Union, Overland Park

Welcome these persons when you see them next!!

The Feminine Canvas: Women, Art, History

This January the Legler Barn Museum is excited to be offering an exhibit entitled "The Feminine Canvas: Women, Art, History." The exhibit will celebrate Women's History Month and the talents of many local women artists. Works from abstract expressionism to portraiture will be on exhibit. "The Feminine Canvas" exhibit opens January 18, 2003 and runs until May 3, 2003. For additional information about this, or any other exhibit, please call the museum at 913-492-0038.

Lenexa Historical Society SOUP LUNCHEON

11:00 a.m. to 1:00 p.m.

Wed. February 12, 2003

Steak Soup or Ham & Bean Soup

Bread, Dessert and Drink

\$5.00 per person

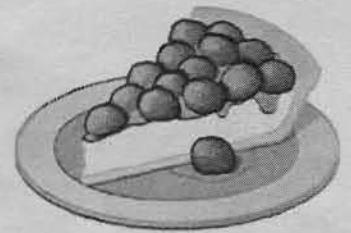
Soup refills: \$1.00

Lenexa Community Center

Downtown Lenexa

13420 Oak Street

Lenexa, KS 66215



A letter with tickets will be mailed out in late January. Call Pat Lierly 913-888-5645 for more information. We appreciate the great support you have given this special event and fund raiser!

New Kansas Book presented by Mary Kay Smith

Kansas Curiosities, by Pam Grouty was published by the Globe Peguiot Press in 2002. It's subtitle is "Quirky Characters, Oddities and other Offbeat Stuff".

On page 18 the Lenexa Historical Society is reported as the maker of "the worlds' largest spinach salad" at the annual Spinach Festival.

On pages 20-21 Bill Nicks' collection of Sunflower Memorabilia is described....2,573 items at the time the book was written.

P.S.....is Bill one of the "quirky characters" ...?



A design concept for a statue
Of Lenexa's namesake,
Na-nex-sa was approved at
City Council on December 17.
For a complete story on this
Exciting development go to
www.kansascity.com and
go for the Neighborhood News
issue Saturday, December 21.
Or call Doug Bartley at 914-
541-8267 and he'll send you
a copy of that issue.



One proposed location for Na-nex-sa

Bill Nicks presenting to City Council

Bill, Jane Klien, Doug Bartley



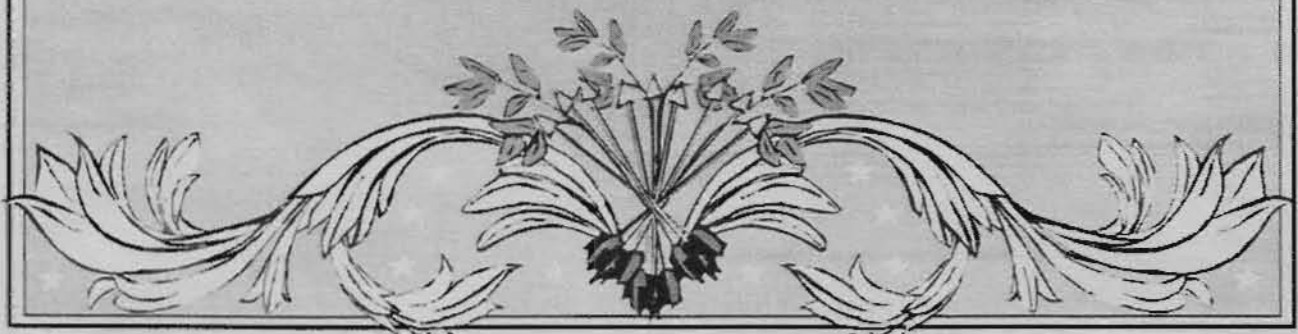
**Kansas Trivia.....by Kansas Trivia Master The Rightful Doctor
Ferninand Henry Walter the McKenzie**

1. What town can call itself the "Home of the govonors"?.....having produced 5.
a. Olathe b. Osawatamie c. Ottawa d. Overland Park
2. When immigrants were homsteading Kansas they could acquire an extra 160 acres of land if they planted 40 acres of what?
a. wheat b. corn c. trees d. sunflowers
3. In a good year for corn in Kansas, how high should it be by the 4th of July?
a. 3 foot b. beginning to tassel c. 4 foot d. an elephants eye

(answers can be found on the last page)

LHS Membership Dues.....

Membership dues for 2003 are due January 1. Since The Lenexa Historical Society receives no funds from the City, membership dues are necessary to support the operational expenses of the Society. Please remit as soon as ;ossible so that you can be included in the new membership directory!



Answers to Kansas Trivia Quiz for this Month:

1. a. Olathe 2. c. trees 3. d. an elephants eye

LHS News is published 6 times a year by the Lenexa Historical Society.

Editor: Doug Bartley, 913-541-8267

Mailing: Katie Evans **Official Photographer:** Sharon Hammontree

Contributing Writers: Allison Elliott, Beryl Hennigh,

Bob Lillie, Walter McKenzie,

Bill Nicks, Mary Kay Smith

Lenexa Historical Society

14915 West 87th Street Parkway

Lenexa, KS 66215-4135

913-492-1568

Non-Profit Organization

U.S. Postage

PAID

Permit Number 57

Shawnee Mission, KS

66202-9503

